

No. 80 ST

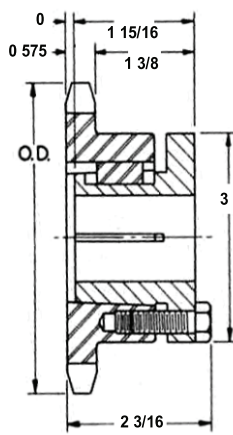
1" PITCH, NOMINAL 0.575"



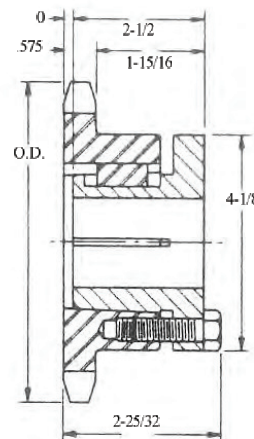
Single - Split Taper Sprockets - With Hardened Teeth

Part No.	No. of Teeth	Diameters		Wgt. Lbs.	Part No.	No. of Teeth	Diameters		Wgt. Lbs.
		Outside	Pitch				Outside	Pitch	
80P13H	13	4.660	4.179	2.30	80Q22H	22	7.560	7.027	8.00
80P14H	14	4.980	4.940	2.70	80Q23H	23	7.880	7.344	8.50
80Q14H	14	4.980	4.494	3.00	80Q24H	24	8.200	7.661	9.30
80P15H	15	5.310	4.810	3.20	80Q25H	25	8.520	7.979	9.90
80Q15H	15	5.310	4.810	3.60	80Q26H	26	8.840	8.296	10.40
80P16H	16	5.630	5.126	3.60	80Q27H	27	9.160	8.614	10.90
80Q16H	16	5.630	5.126	4.60	80Q28H	28	9.480	8.931	11.50
80P17H	17	5.950	5.442	5.40	80Q30H	30	10.110	9.567	13.00
80Q17H	17	5.950	5.442	5.40	80Q32H	32	10.750	10.202	14.80
80P18H	18	6.270	5.759	6.00	80Q33H	33	11.070	10.520	15.50
80Q18H	18	6.270	5.759	6.00	80Q35H	35	11.710	11.156	17.80
80P19H	19	6.590	6.079	6.40	80Q36H	36	11.980	11.474	18.10
80Q19H	19	6.590	6.079	6.40	80Q40	40	13.310	12.746	21.90
80Q20H	20	6.910	6.392	6.90	80Q45	45	14.900	14.336	27.80
80Q21H	21	7.240	6.710	7.40	80Q48	48	15.860	15.290	30.80

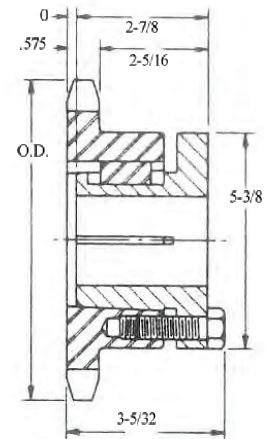
* Sprockets with Q indicates Q1 bushings should be used, Q1 max. bore 2-11/16.



80 P1 Bushing



80 Q1 Bushing



80 R1 Bushing